

# Garmin Navigator User Guide



**Applicable Model: T622**

## Change History

File Name	Garmin Navigator User Guide	Created By	William Sun
Project	T622	Creation Date	2015-07-30
		Update Date	2016-02-03
Subproject	Accessory User Guide	Total Pages	11
Version	V1.0	Confidential	External Documentation

## Contents

1 Copyright and Disclaimer .....	- 4 -
2 Product Function and Specifications .....	- 4 -
2.1 Product Function .....	- 4 -
2.2 Specifications .....	- 4 -
3 Main Device and Accessory .....	- 4 -
4 Connecting the Garmin Navigator to the T622 .....	- 4 -
5 Occupied Resource .....	- 5 -
6 Configuring the T622 .....	- 6 -
6.1 Setting the Serial Port by Meitrack Manager .....	- 6 -
7 GPRS Commands .....	- 6 -
7.1 Sending the Destination to the Garmin Navigator – D74 .....	- 6 -
7.2 Sending Messages from the Garmin Navigator – D75 .....	- 7 -
7.3 Sending Messages to the Garmin Navigator – D76 .....	- 7 -
7.4 Obtaining Garmin Navigator Info – D77 .....	- 8 -
8 MS03 Platform Functions .....	- 8 -
8.1 Sending Messages to the Garmin Navigator .....	- 8 -
8.2 Sending the Destination to the Garmin Navigator .....	- 10 -
8.3 Obtaining Garmin Navigator Info .....	- 10 -

## 1 Copyright and Disclaimer

Copyright © 2016 MEITRACK. All rights reserved.

 and  are trademarks that belong to Meitrack Group.

The user manual may be changed without notice.

Without prior written consent of Meitrack Group, this user manual, or any part thereof, may not be reproduced for any purpose whatsoever, or transmitted in any form, either electronically or mechanically, including photocopying and recording.

Meitrack Group shall not be liable for direct, indirect, special, incidental, or consequential damages (including but not limited to economic losses, personal injuries, and loss of assets and property) caused by the use, inability, or illegality to use the product or documentation.

## 2 Product Function and Specifications

### 2.1 Product Function

- Provide vehicle navigation.
- Communicate between the control center and the vehicle.
- Track vehicle's location.

### 2.2 Specifications

Please refer to the Garmin Navigator User Guide provided by the manufacturer.

## 3 Main Device and Accessory



Garmin navigator



Garmin navigator data wire

## 4 Connecting the Garmin Navigator to the T622

Figure: T622's dedicated ports

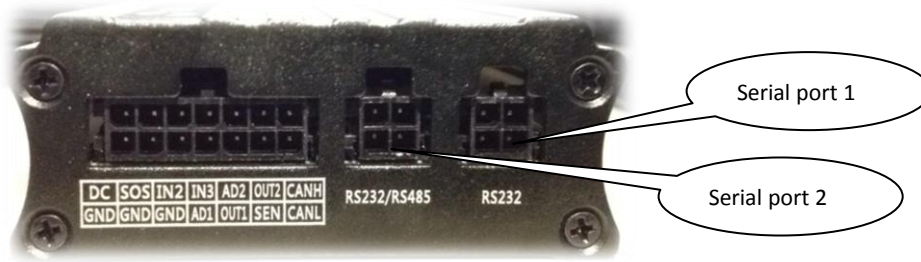


Figure: Connecting the Garmin navigator to the tracker



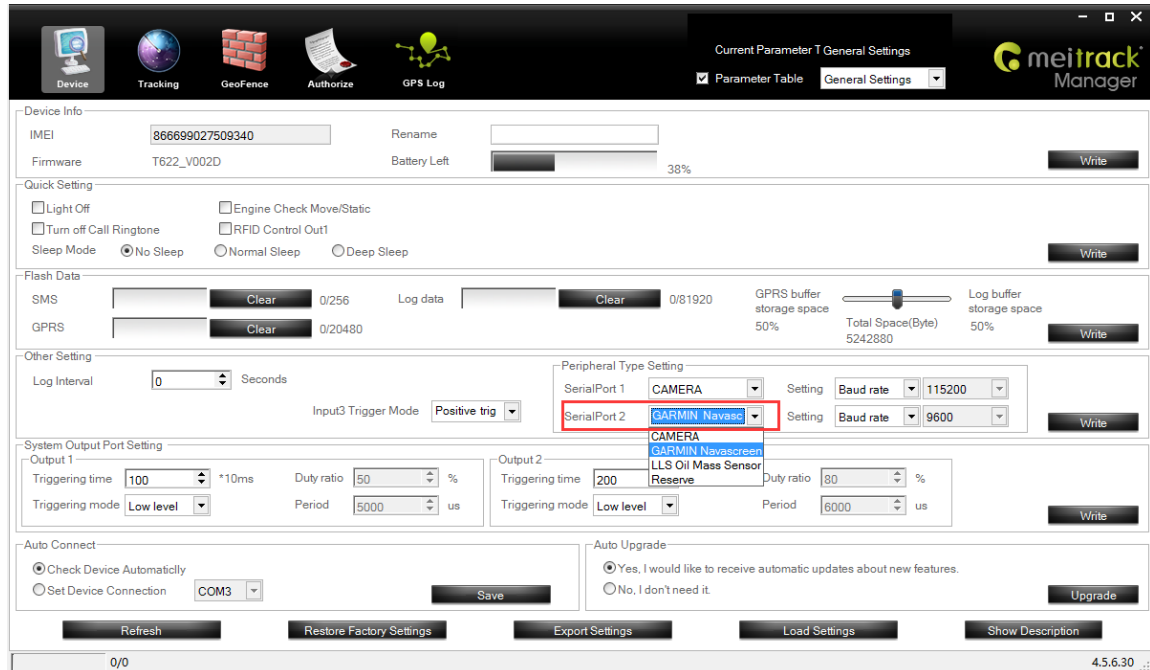
Plug the Garmin navigator data wire (RS232) into T622's dedicated port (RS232 or RS232/RS485).

## 5 Occupied Resource

T622: RS232 port or RS232/RS485 port

## 6 Configuring the T622

### 6.1 Setting the Serial Port by Meitrack Manager



Please select corresponding port according to the physical port. In this example, use serial port 2.

On the **Device** page, set **SerialPort 2** to **GARMIN Navascreen**.

## 7 GPRS Commands

### 7.1 Sending the Destination to the Garmin Navigator – D74

GPRS Setting	D74,X1,X2,X3,X4,X5,X6
GPRS Reply	D74,OK/<Error code>
Description	<p>X1: indicates the time when a message generates; 32-bit unsigned integer; hexadecimal</p> <p>X2: indicates the message ID, which is unique; hexadecimal; contains up to 8 characters. If the message ID already exists, the command fails to be sent.</p> <p>X3: indicates the latitude; 32-bit signed; hexadecimal; accurate to 6 decimal places.</p> <p>X4: indicates the longitude; 32-bit signed; hexadecimal; accurate to 6 decimal places.</p> <p>X5: indicates the destination; Unicode hexadecimal character string; contains up to 398 characters (199 bytes).</p> <p>X6: indicates the serial port number of the Garmin navigator. X6 = 1: serial port 1; X6 = 2: serial port 2.</p>
Applicable Model	T622
<b>Example</b>	
GPRS Sending	@@O73,866699027509340,D74,302480F5,00000000,015787A6,06CC5FBB,F5456B00,02*11\r\n

GPRS Reply	\$\$O28,866699027509340,D74,2*15\r\n
------------	--------------------------------------

## 7.2 Sending Messages from the Garmin Navigator – D75

GPRS Setting	D75,X1,X2,X3,X4,X5,X6,X7,X8
GPRS Reply	D75,OK/<Error code>
Description	<p>X1: indicates the time when a message generates; 32-bit unsigned integer;</p> <p>X2: indicates the latitude; 32-bit signed; hexadecimal; accurate to 6 decimal places.</p> <p>X3: indicates the longitude; 32-bit signed; hexadecimal; accurate to 6 decimal places.</p> <p>X4: indicates the message ID sent from the platform to the Garmin navigator.</p> <p>X5: indicates the message length; contains 1 byte; hexadecimal.</p> <p>X6: indicates the message ID sent from the Garmin navigator to the platform; hexadecimal; contains up to 16 characters.</p> <p>X7: indicates the message to be sent; Unicode hexadecimal character string; contains up to 398 characters (199 bytes).</p> <p>X8: indicates the serial port number of the Garmin navigator. X8 = 1: serial port 1; X8 = 2: serial port 2.</p>
Applicable Model	T622
<b>Example</b>	
GPRS Sending	\$\$I105,866699027509340,D75,302480F5,015787A6,06CC5FBB,03335C8B,08,000000AD,0042006800670068006700680074,02*FF\r\n
GPRS Reply	@@I28,866699027509340,D75,OK*68\r\n

## 7.3 Sending Messages to the Garmin Navigator – D76

GPRS Setting	D76,X1,X2,X3,X4,X5
GPRS Reply	D76,OK/<Error code>
Description	<p>X1: indicates the time when a message generates; 32-bit unsigned integer;</p> <p>X2: indicates the message length; hexadecimal</p> <p>X3: indicates the message ID; hexadecimal; contains up to 16 characters. If the message ID already exists, the command fails to be sent.</p> <p>X4: indicates the message to be sent; Unicode hexadecimal character string; contains up to 398 characters (199 bytes).</p> <p>X5: indicates the serial port number of the Garmin navigator. X5 = 1: serial port 1; X5 = 2: serial port 2.</p>
Applicable Model	T622
<b>Example</b>	
GPRS Sending	@@n85,866699027509340,D76,30245BED,8,0191E7B6,004600530044004600530046004400530046,2*B6\r\n
GPRS Reply	\$\$n28,866699027509340,D76,OK*33\r\n

## 7.4 Obtaining Garmin Navigator Info – D77

GPRS Setting	D77,Y1
GPRS Reply	D77,X1,X2,X3,X4,X5,X6
Description	<p>X1: indicate the estimate time of arrival; 32-bit unsigned integer;</p> <p>X2: indicates the message ID; hexadecimal; contains up to 8 characters.</p> <p>X3: indicates the remaining mileage; hexadecimal; contains up to 8 characters; unit: meter.</p> <p>X4: indicates the latitude where the Garmin navigator is located; 32-bit signed; hexadecimal; accurate to 6 decimal places.</p> <p>X5: indicates the longitude where the Garmin navigator is located; 32-bit signed; hexadecimal; accurate to 6 decimal places.</p> <p>X6: indicates the serial port number of the Garmin navigator. X6 = 1: serial port 1; X6 = 2: serial port 2.</p> <p>Y1: indicates the serial port number of the Garmin navigator. Y1 = 1: serial port 1; Y1 = 2: serial port 2.</p> <p>Note: This command is available only when the Garmin navigator is working.</p>
Applicable Model	T622
<b>Example</b>	
GPRS Sending	@@O28,866699027509340,D77,2*15\r\n
GPRS Reply	\$\$O73,866699027509340,D77,FFFFFFFF,00000000,FFFFFFFF,F5456B00,F5456B00,02*11\r\n

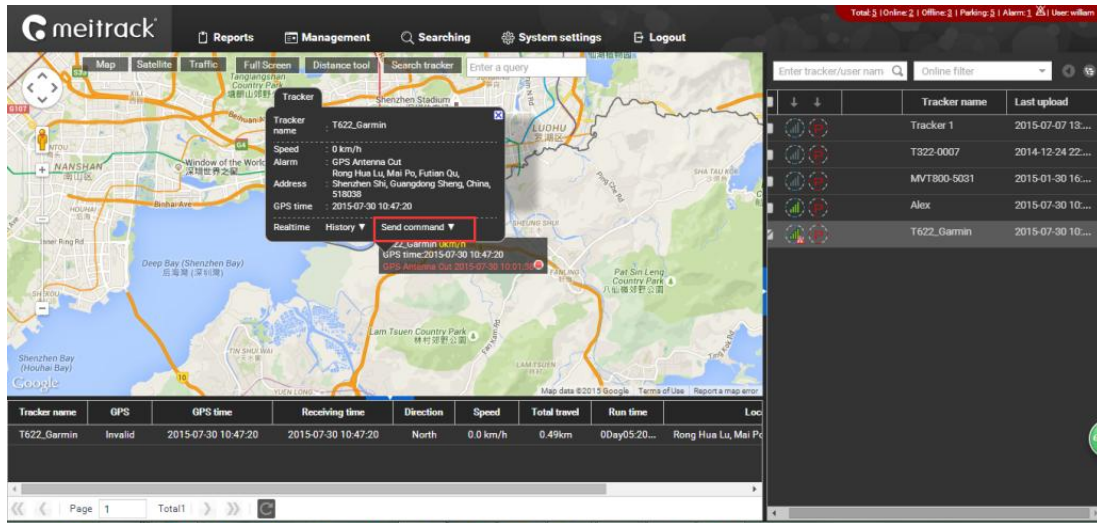
## 8 MS03 Platform Functions

### 8.1 Sending Messages to the Garmin Navigator

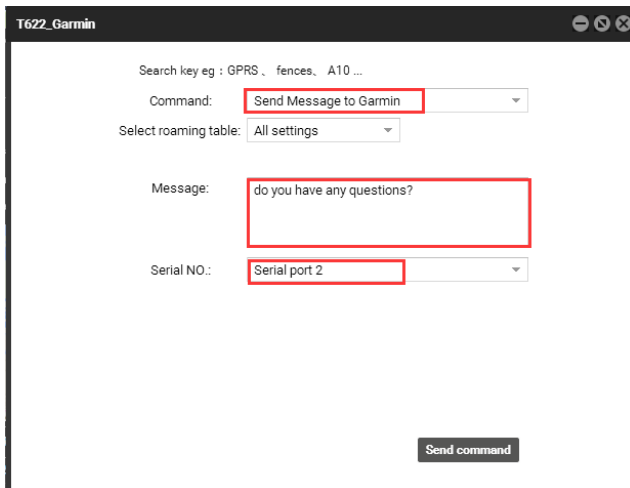
Before using the function, make sure the Garmin navigator is connected to external power supply and the tracker is online.

1. Visit <http://ms03.trackingmate.com>, enter the user name and password, and log in to the MS03. (Purchase the login account from your provider.) Make sure the device IP address has been set to **67.203.15.7** and port to **10003**.
2. Select the tracker, and choose **Send command**.

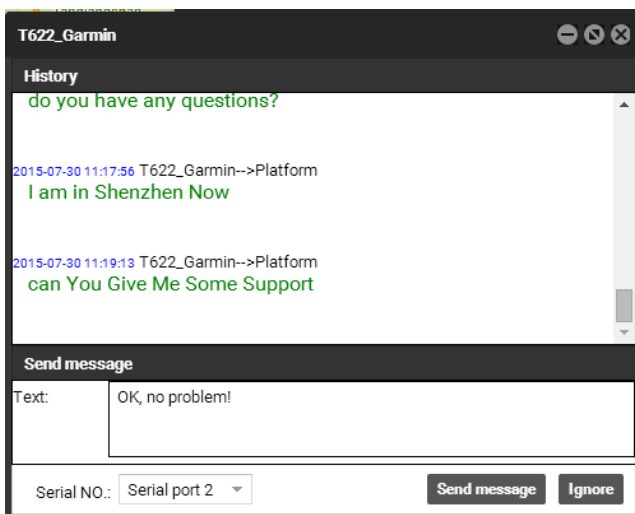




- From the pop-up information box, select **Send Message to Garmin** from **Command**, set **Message** and **Serial NO.**, and click **Send command**.

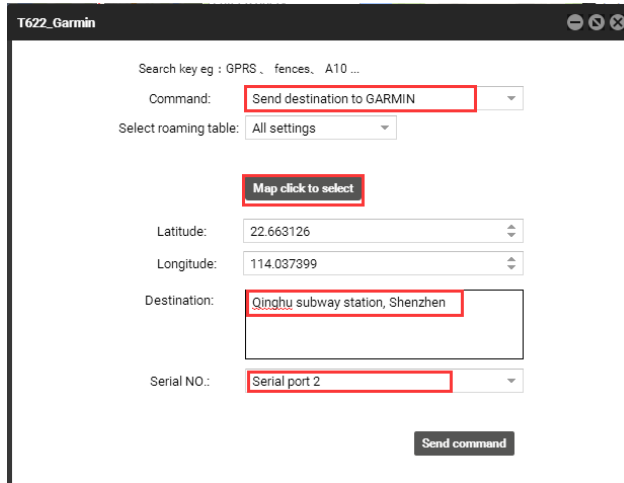


- The platform will communicate with the Garmin navigator.



## 8.2 Sending the Destination to the Garmin Navigator

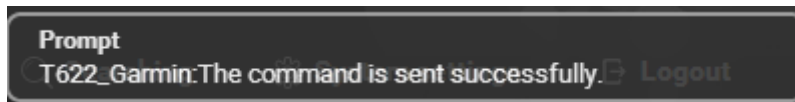
1. On the following window, select **Send destination to GARMIN** from **Command**, click **Map click to select** to set the position, enter the detailed position on **Destination**, set **Serial NO.**, and click **Send command**.



The screenshot shows a window titled 'T622\_Garmin' with the following fields and controls:

- Search key eg : GPRS , fences, A10 ...
- Command: **Send destination to GARMIN** (highlighted with a red box)
- Select roaming table: All settings
- Map click to select** (button highlighted with a red box)
- Latitude: 22.663126
- Longitude: 114.037399
- Destination: **Qinghu subway station, Shenzhen** (highlighted with a red box)
- Serial NO.: **Serial port 2** (highlighted with a red box)
- Send command** (button)

2. The following prompt will be displayed if the command is sent successfully.

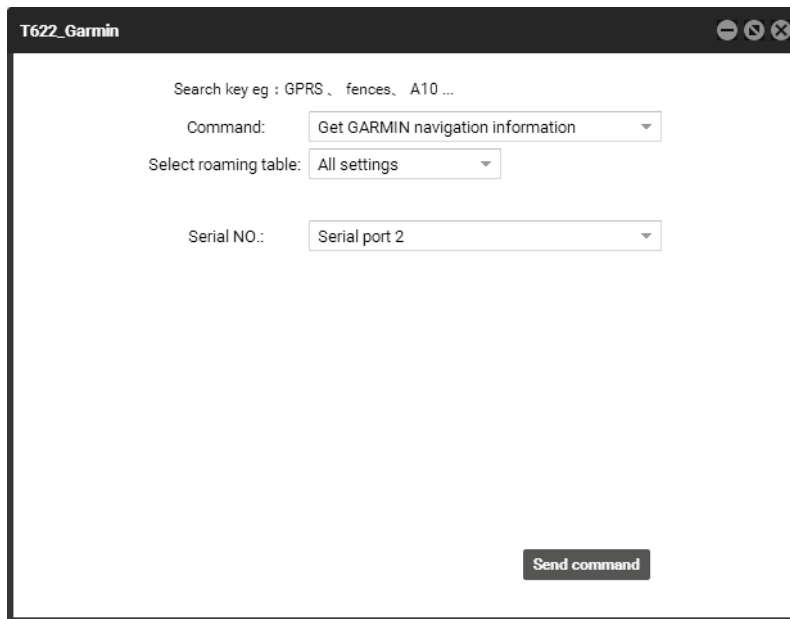


On the Garmin navigator, you will see the route planning.



## 8.3 Obtaining Garmin Navigator Info

1. On the following window, select **Get GARMIN navigation information** from **Command**, set **Serial NO.**, and click **Send command**.



2. The following prompt will be displayed.

```
Prompt
T622_Garmin Response System settings Logout
Estimated arrival time:2015-07-30 00:17:58
Left Odometer(m):27521
Latitude:22.654775
Longitude:114.057991
Serial NO.:02
```

Note: This function is available only when the Garmin navigator is working.

**If you have any questions, do not hesitate to email us at [info@meitrack.com](mailto:info@meitrack.com).**